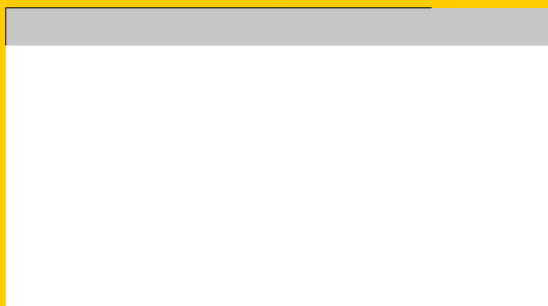


BookLife
Readers

A stylized graphic element located at the bottom of the logo. It consists of a black, downward-pointing pen nib on the left, which curves into a simple, upward-curving line resembling a smile on the right.

HERE IS A LIST OF ALTERNATIVE PHONEMES FOR THIS PHASE OF LEARNING. AN EXAMPLE OF THE PRONUNCIATION CAN BE FOUND IN BRACKETS.

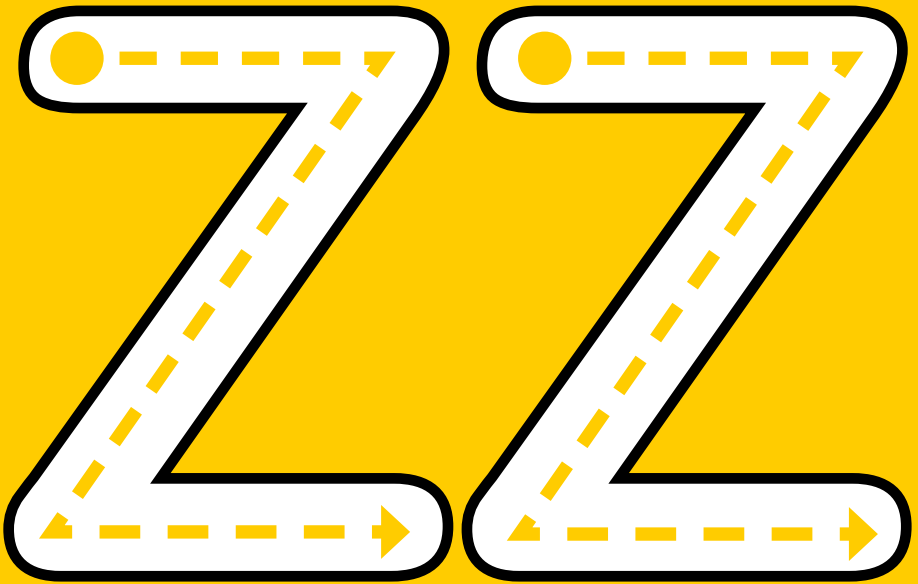


HERE ARE SOME WORDS WHICH YOUR CHILD MAY FIND TRICKY.

TOP TIPS FOR HELPING YOUR CHILD TO READ:

- Allow children time to break down unfamiliar words into units of sound and then encourage children to string these sounds together to create the word.
- Encourage your child to point out any focus phonics when they are used.
- Read through the book more than once to grow confidence.
- Ask simple questions about the text to assess understanding.
- Encourage children to use illustrations as prompts.

Can you say this sound and draw it with your finger?



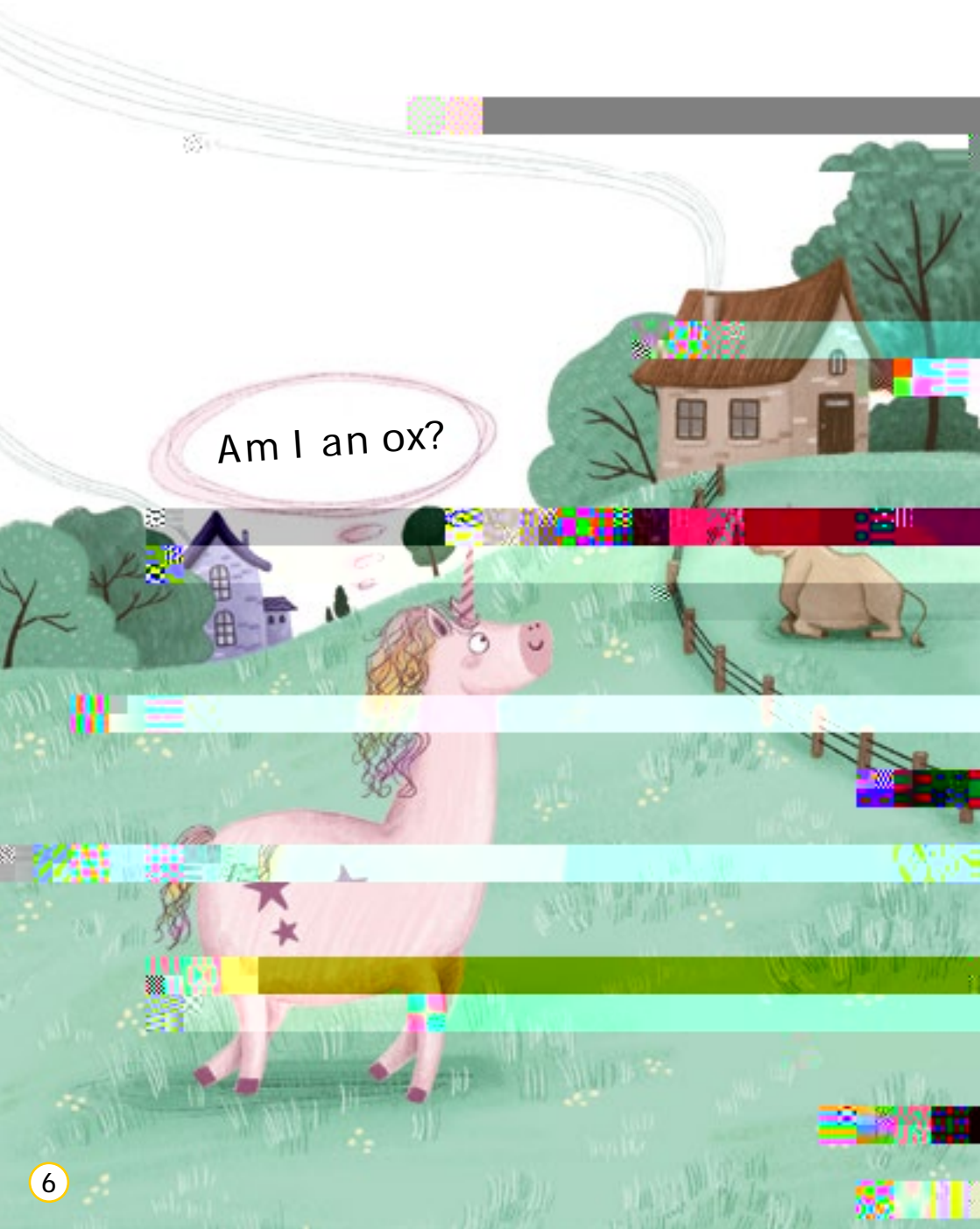
I Am Izza



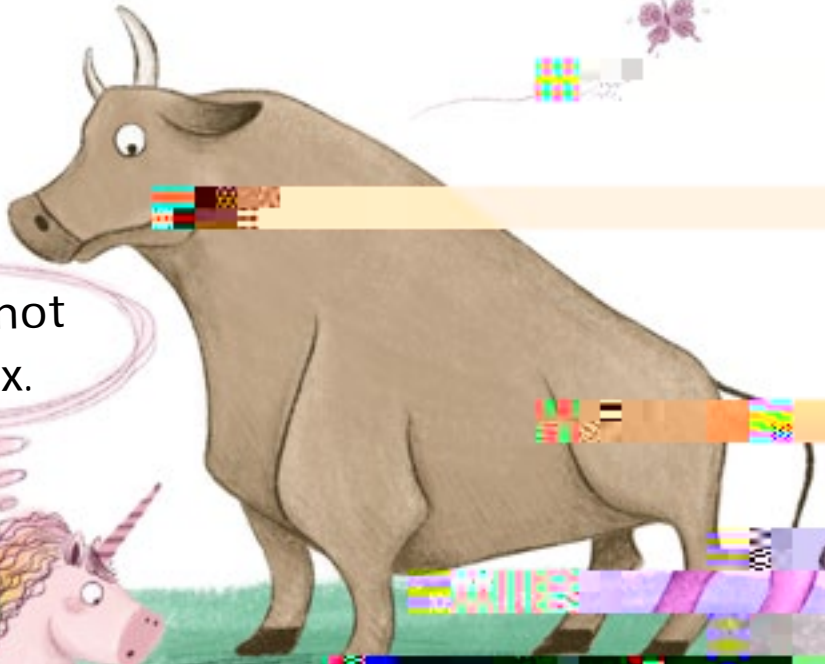
Written by
Kirsty Holmes

Illustrated by
Lynne Feng

I zza meets an ox.



The ox is big.



I am not
an ox.



Izza meets a fox.



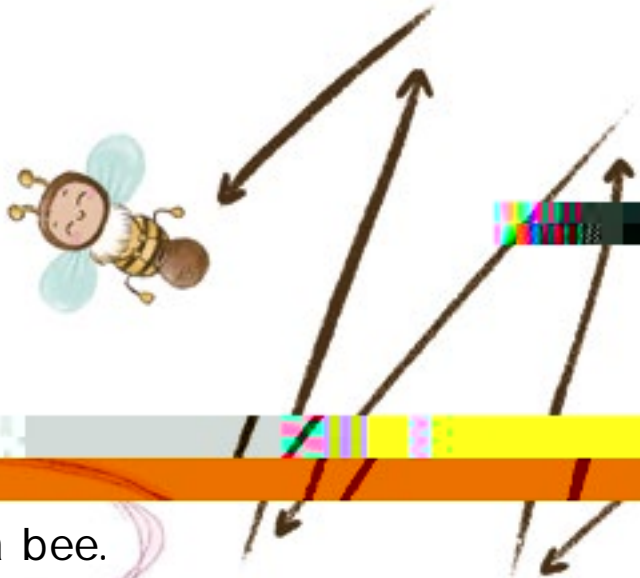
The fox is red.



I z z a m e e t s a b u z z i n g b e e . B u z z ! B u z z !



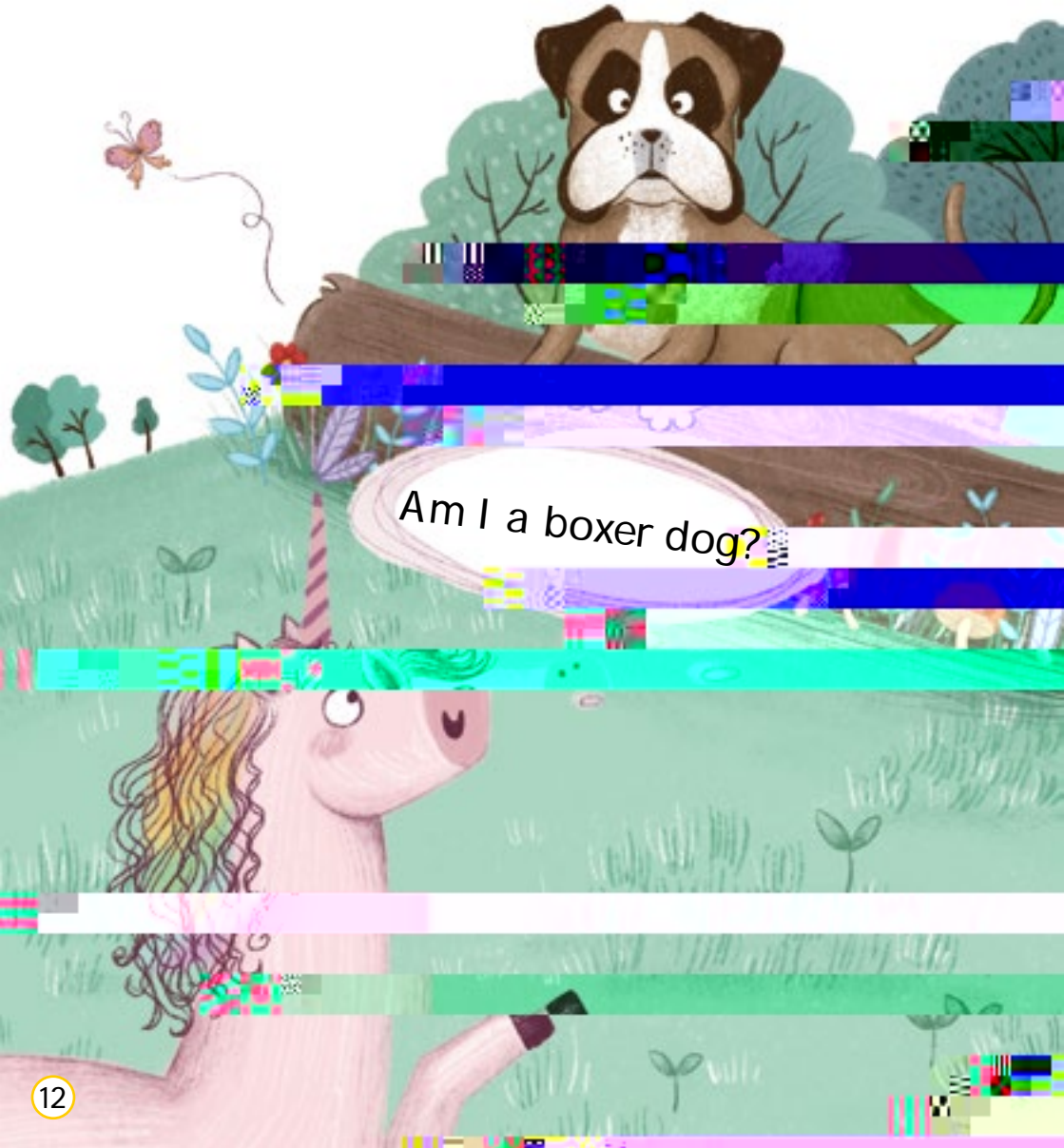
The bee zigs and zags.



I am not a bee.



I zza meets a boxer dog.



Am I a boxer dog?

The boxer dog wags his tail.

I am not
a boxer dog.



I zza meets a zebra.



The zebra is not pink.

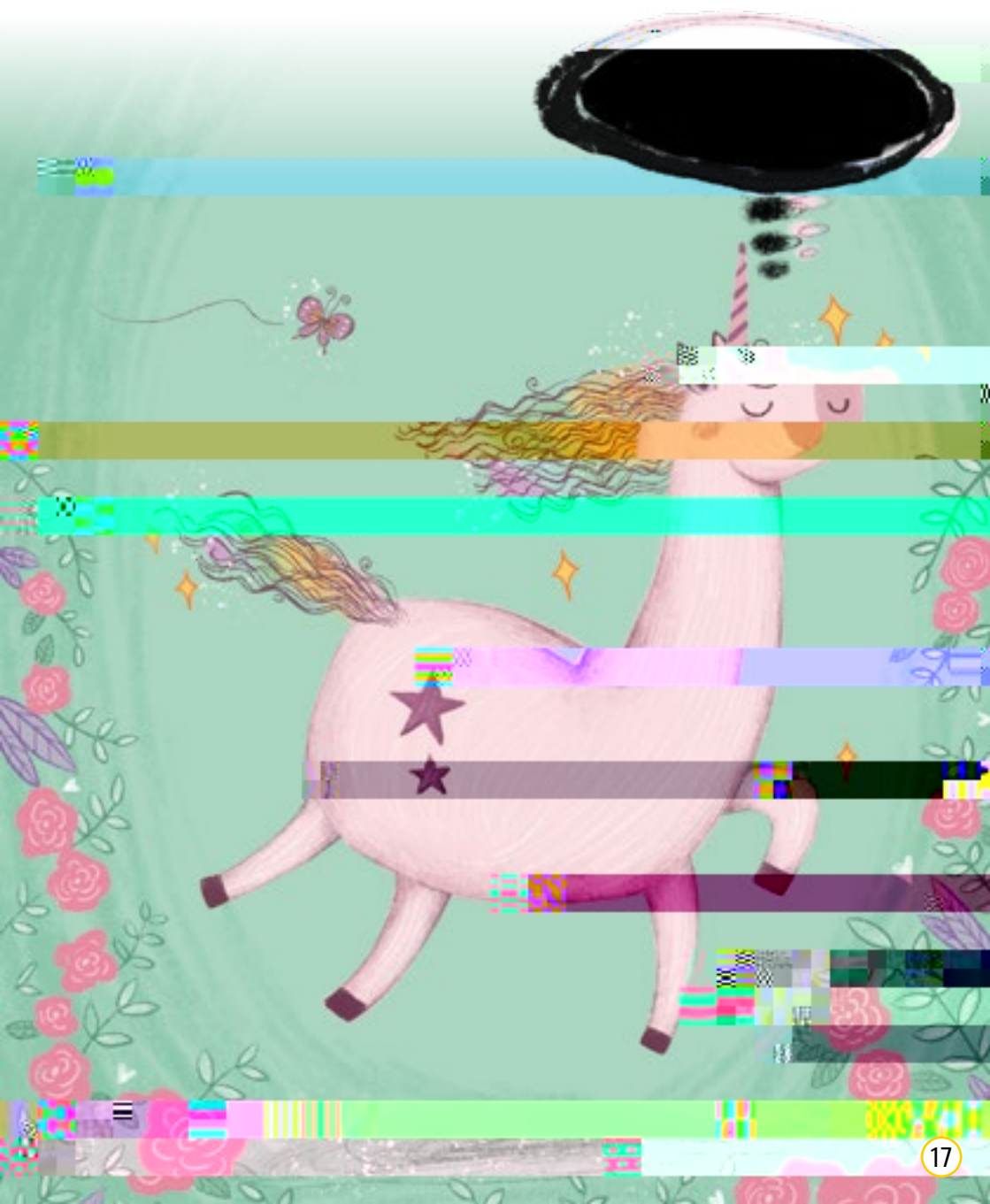
I am not a zebra.



Izza is not an ox, a fox, a bee, a dog or a zebra.



Izza is pink. Izza has fuzz.



Chuck Is on a Quest

Written by
Robin Twiddy

Illustrated by





Look! The pond of pongos and shells.



It is a big quest. Chuck will not quit.



Up the hill of big chins. Chuck
cannot quit.



Shush, Chuck! This is the hall of naps.



Chuck is on a quest, but he will not quit.



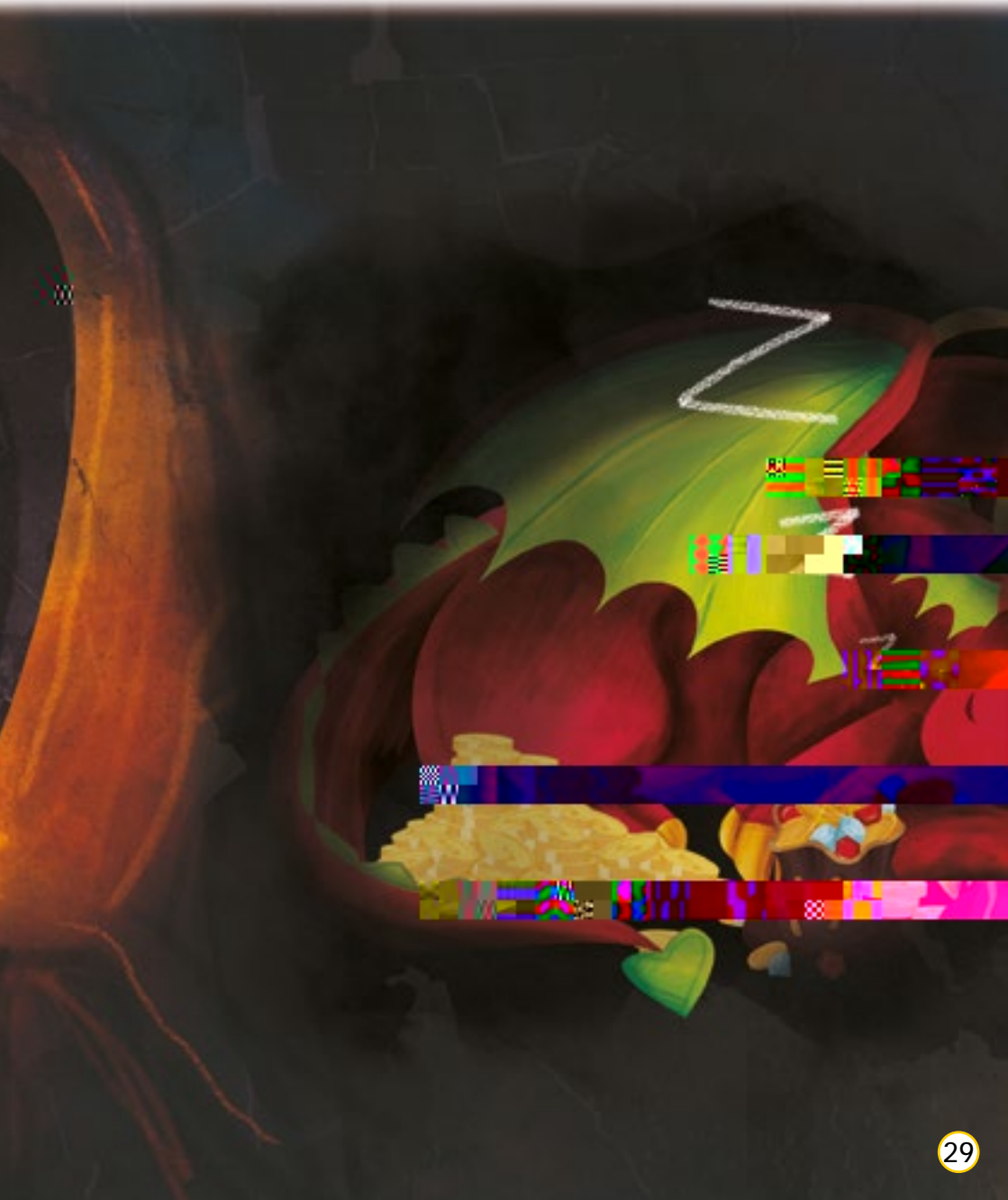
Chuck is on a path. Look at the men.



It is the den. Chuck needs to hit the duck to get in.



The den is full of cash.



Be quick, Chuck. Get all of the cash.



It is the end of the quest. Chuck needs to go back. It will not be quick!





An Introduction to BookLife Readers...

Our Readers have been specifically created in line with the London Institute of Education's approach to book banding and are phonetically decodable and ordered to support each phase of the Letters and Sounds document.

Each book has been created to provide the best possible reading and learning experience. Our aim is to share our love of books with children, providing both emerging readers and prolific page-turners with beautiful books that are guaranteed to provoke interest and learning, regardless of ability.

BOOK BAND GRADED using the Institute of Education's approach to levelling.

PHONETICALLY DECODABLE supporting each phase of Letters and Sounds.

EXERCISES AND QUESTIONS to offer reinforcement and to ascertain comprehension.

BEAUTIFULLY ILLUSTRATED to inspire and provoke engagement, providing a variety of styles for the reader to enjoy whilst reading through the series.



BookLife

